

КОМПОНЕНТЫ



15mm/15mm

1010-1000



15mm/4mm

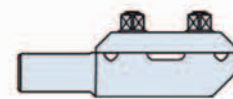
1010-1023

15mm/5mm

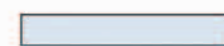
1010-1024

15mm/9mm

1010-1026



1010-1010



15mm, length 100mm

1010-1032

15mm, length 125mm

1010-1033

15mm, length 150mm

1010-1034

15mm, length 200mm

1010-1035

15mm, length 250mm

1010-1036

5020-1000



#

1010-1090



Диаметр 4 мм, длина 100 мм, резьба 35 мм

2015-1020

Диаметр 5 мм, длина 110 мм, резьба 40 мм

2020-1035

Диаметр 5 мм, длина 140 мм, резьба 50 мм

2020-1020

Диаметр 5 мм, длина 170 мм, резьба 50 мм

2020-1025

Диаметр 5 мм, длина 210 мм, резьба 55 мм

2020-1030



Диаметр 5 мм, длина 250 мм, резьба 50 мм

2030-1020

Диаметр 5 мм, длина 200 мм, резьба 50 мм

2030-1025



5025-1000



5010-1000



6010-1000

Distributed by :

CE 0459
EN 93/42



Cat. No: STD 09-2004

To ensure the best quality of its products and their improvements,
Gexfix reserves the right to modify all or part of their products



Gexfix S.A.
Av. De La Praille 50
CH-1227 Carouge
Tél : +41 22 308 16 70
Fax : +41 22 308 16 79
www.gexfix.ch
ISO 9001/2000
ISO 13485/2003



ВНЕШНИЙ ФИКСАТОР LARGE

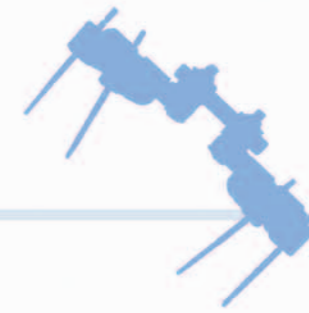
Назад к основам,
простоте,
стабильности и
универсальности



IT'S GOT TO MAKE SENSE



THE GEXFIX EXFIX SYSTEM



DESIGNED FOR :

- Independent pin placement providing freedom of pin insertion in any plane, subsequently to be connected by carbon tubes to make up fixation frame
 - Pin cluster clamps holding 2 or 3 pins providing simple, single-plane frame
- These configurations allow 3 plane fracture reduction and intra or postoperative correction of fracture alignment

THE FIXATOR :

- Swiss made
- Made of high performance composite material providing :
 - X-ray transparency for easier fracture visualisation
 - Maximum stability
 - Significantly reduced weight versus other established external fixation frames
 - High strength of components means compact frame configurations and reduced bulkiness compared to other systems
 - Short learning curve for operating surgeon
 - Versality limited only by the anatomy
 - Sterilisation box containing assorted components for construction of virtually unlimited variety of frame configurations
- Use as a definitive or temporary fixator

PINS :

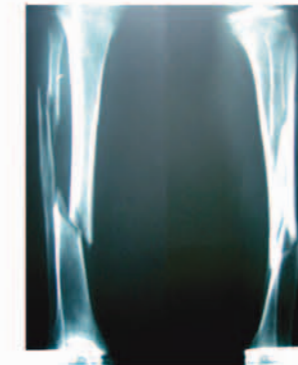
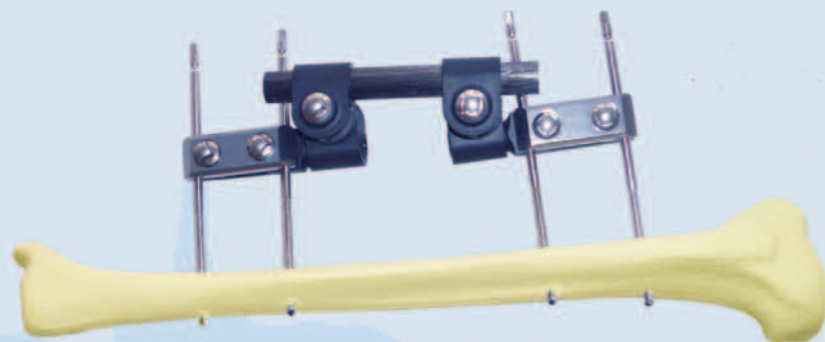
- Half pins for most applications
- Transfixing pins (for selected procedures eg. ankle, HTO)
- All pins are self drilling, self trapping: one step insertion, no need for predrilling
- Excellent holding power in cortical or cancellous bone

FEW BASIC COMPONENTS :

- Improved hospital inventory management
- Traceability code and catalogue number engraved on each component

SIMPLE INSTRUMENTATION :

- One drill brace to insert pins and tighten frame components
- Trocar and sleeve protection



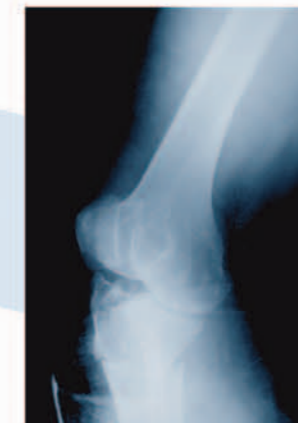
X-ray Pre-Op



X-ray Post-Op



Frame in situ



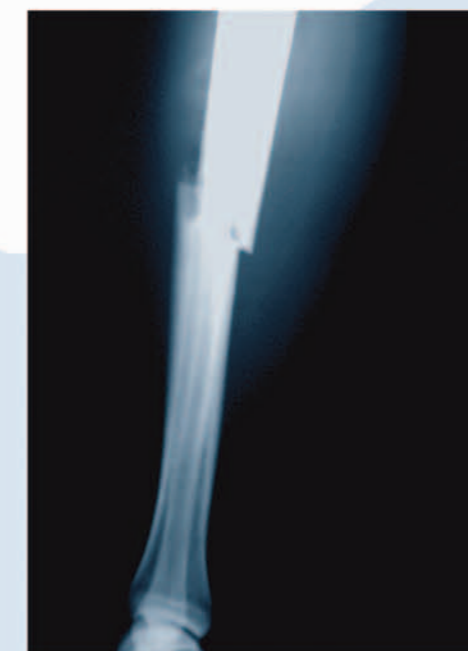
X-ray Pre-Op



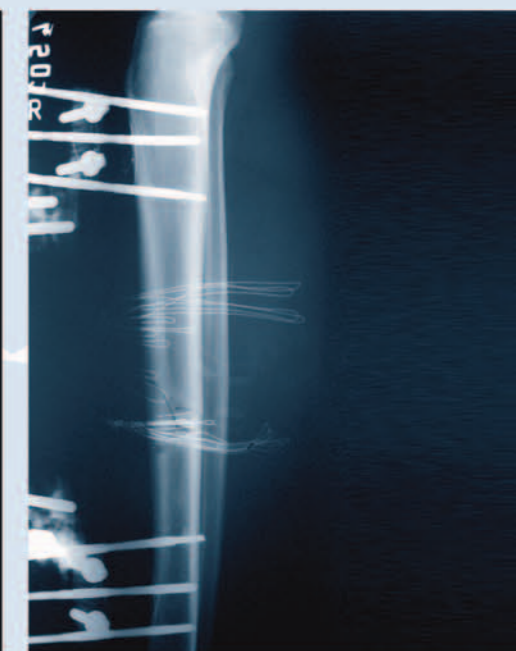
X-ray Post-Op



Frame in situ



X-ray Pre-Op



X-ray Post-Op